



18 Old Oak Common Lane  
Acton  
London  
W3 7EL  
T 020 8749 9798  
E sales@churchillmathesons.com  
www.churchillmathesons.com

Churchill & Mathesons

Churchfield Road, London, W3 6AH

£426 Per Week

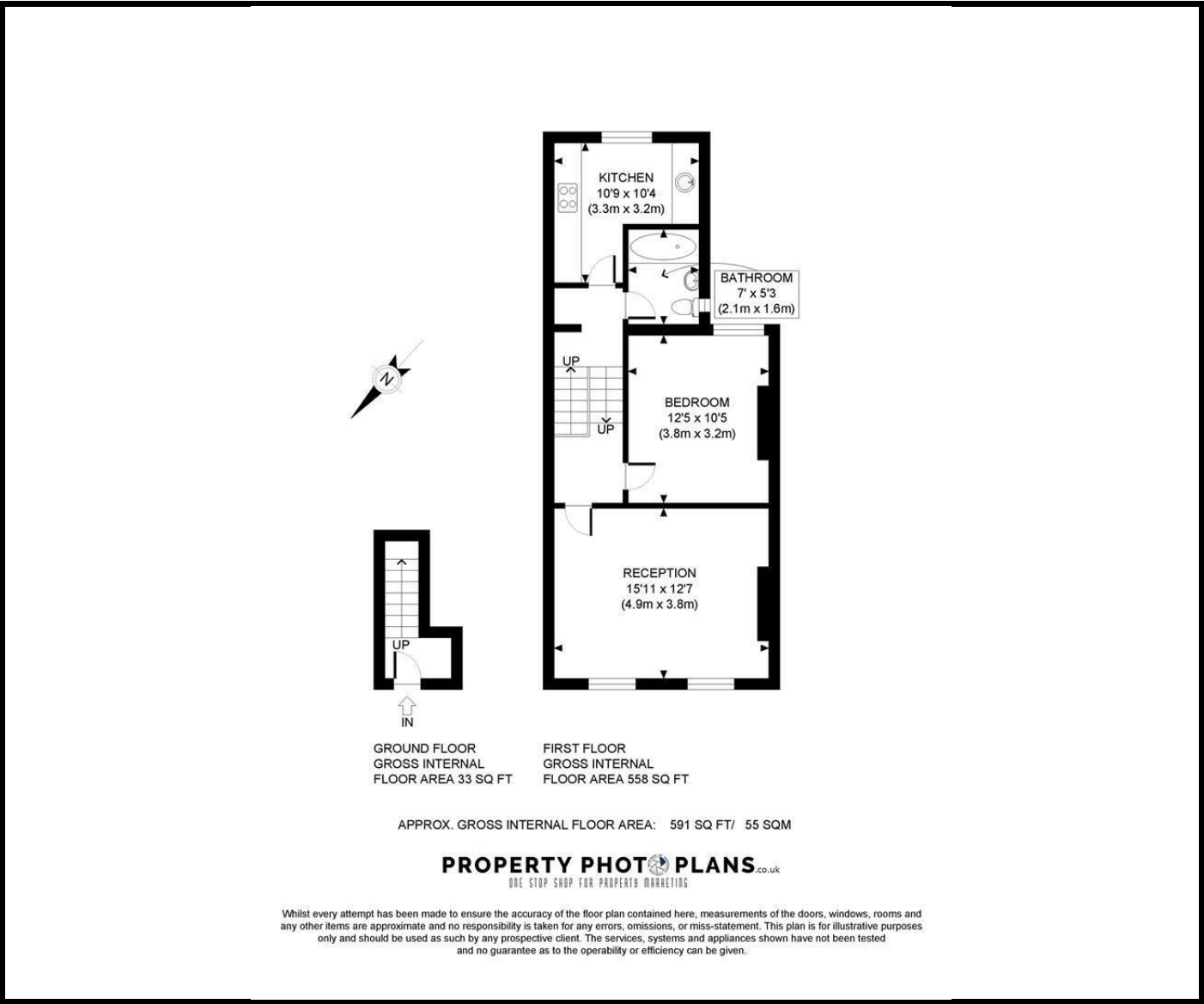


**KEY FEATURES:**

- Spacious 1 bedroom first floor flat
- Separate reception room
- Excellent location
- UNFURNISHED ~ AVAILABLE 2nd of FEBRUARY
- Ealing Council, Council Tax Band C

Recently refurbished, 1 bedroom flat above an office  
Spacious bedroom  
Large and bright reception room  
Separate fully fitted kitchen  
Stylish bathroom  
Offered in excellent condition throughout  
Located on the ever popular Churchfield Road. Excellent transport links  
UNFURNISHED ~ AVAILABLE 2nd of FEBRUARY  
Ealing Council, Council Tax Band C





Energy Efficiency Rating		
	Current	Potential
Very energy efficient - lower running costs		
(92 plus) <b>A</b>		
(81-91) <b>B</b>		
(69-80) <b>C</b>		
(55-68) <b>D</b>		
(39-54) <b>E</b>		
(21-38) <b>F</b>		
(1-20) <b>G</b>		
Not energy efficient - higher running costs		
<b>England &amp; Wales</b>	EU Directive 2002/91/EC	

Environmental Impact (CO <sub>2</sub> ) Rating		
	Current	Potential
Very environmentally friendly - lower CO <sub>2</sub> emissions		
(92 plus) <b>A</b>		
(81-91) <b>B</b>		
(69-80) <b>C</b>		
(55-68) <b>D</b>		
(39-54) <b>E</b>		
(21-38) <b>F</b>		
(1-20) <b>G</b>		
Not environmentally friendly - higher CO <sub>2</sub> emissions		
<b>England &amp; Wales</b>	EU Directive 2002/91/EC	

Whilst every effort is made to give a fair description, the accuracy of these particulars is not guaranteed, neither do they constitute an offer or contract.

**CHURCHILL & MATHESONS ESTATE AGENTS** have not tested any apparatus, equipment, fitting or services and so cannot verify that they are in working order. The buyer is advised to obtain verification from their solicitor or surveyor. Measurements are correct to within +/-6 A sonic tape is used. None of the statements contained in these particulars or any of our properties are to be relied upon as a representation of fact.